



Walthamstow West Community Council
7th November 2005

Blackhorse Lane: ***fulfilling the potential***

Matthew Nimmo, Regenfirst



Blackhorse Lane: *fulfilling the potential*

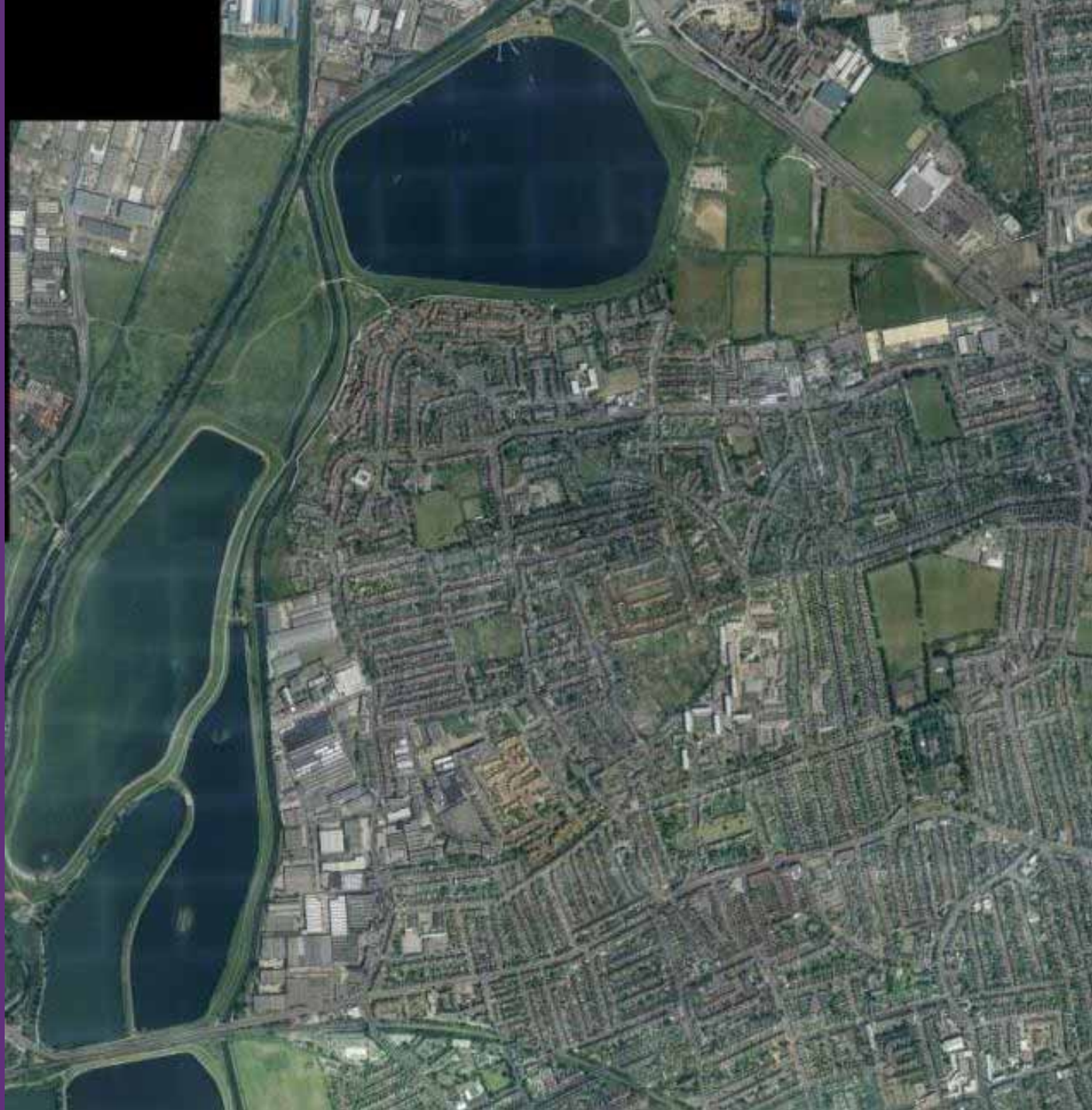


AN AREA ACTION PLAN FOR BLACKHORSE LANE

- Central government drive and funding
- Council identified Blackhorse Lane as major opportunity area
- Chance to transform Blackhorse Lane into a thriving, more attractive place



POTENTIAL OF THE AREA

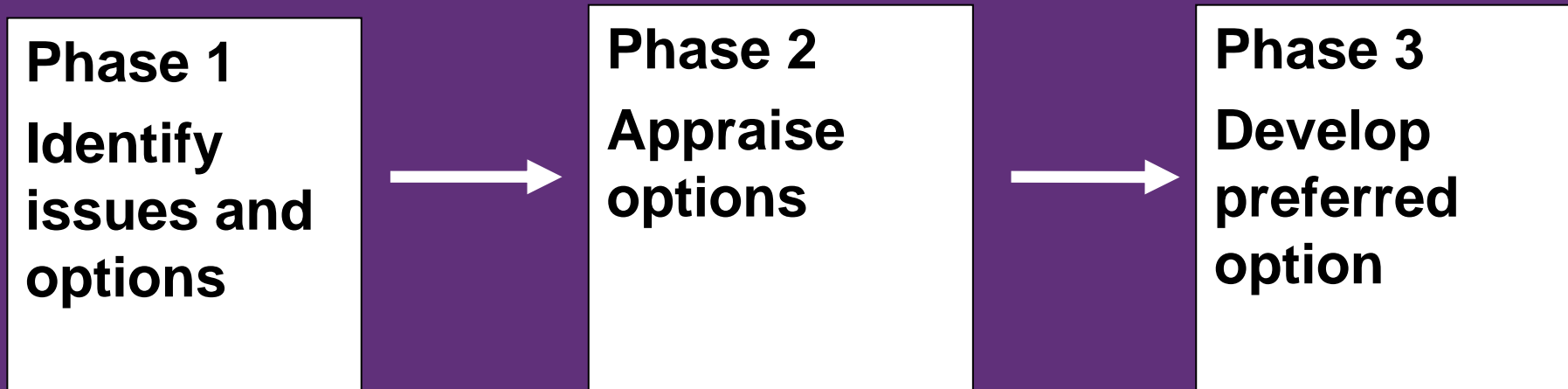




Blackhorse Lane:
fulfilling the potential



DEVELOPING AN AREA ACTION PLAN





Blackhorse Lane: *fulfilling the potential*



WORKING
TOGETHER
WITH LOCAL
PEOPLE





Blackhorse Lane: *fulfilling the potential*



PRIORITIES FOR LOCAL PEOPLE

- New homes, shops and cafes/bars around Blackhorse Road Station
- Improved access to Lea Valley Park and more to do in the Park and in local recreation grounds
- More community venues and activities, particularly for teenagers.
- Improved bus services, parking and road safety



Blackhorse Lane: *fulfilling the potential*

A large poster for 'Blackhorse Lane: fulfilling the potential'. It features a large black horse sculpture in the background. The text 'Blackhorse Lane: fulfilling the potential' is prominently displayed. Below the title, there are three circular icons: a man, a landscape, and a building. The text '3 options for the future of your area...' is written below the icons. At the bottom, it says 'Development options for consultation November 2006' and includes the Waltham Forest logo.

Blackhorse Lane:
fulfilling the potential

3 options for the future of your area...

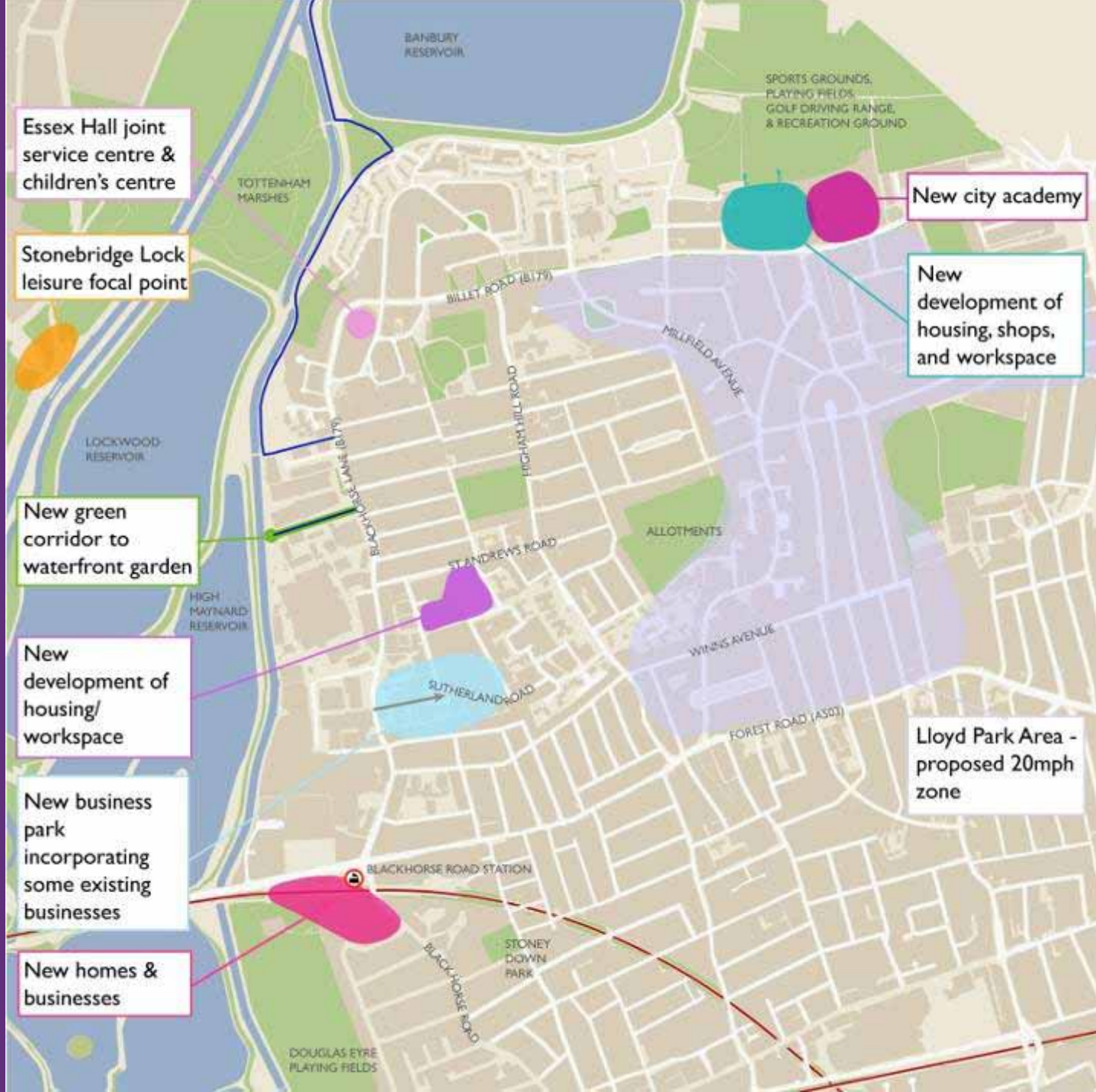
Development options for consultation November 2006

Waltham Forest

THREE OPTIONS FOR THE FUTURE OF BLACKHORSE LANE

OPTION 1

Planned development





Proposed waterfront garden on Uplands Business Park (Options 1, 2 and 3)

OPTION 2

Developing the station area

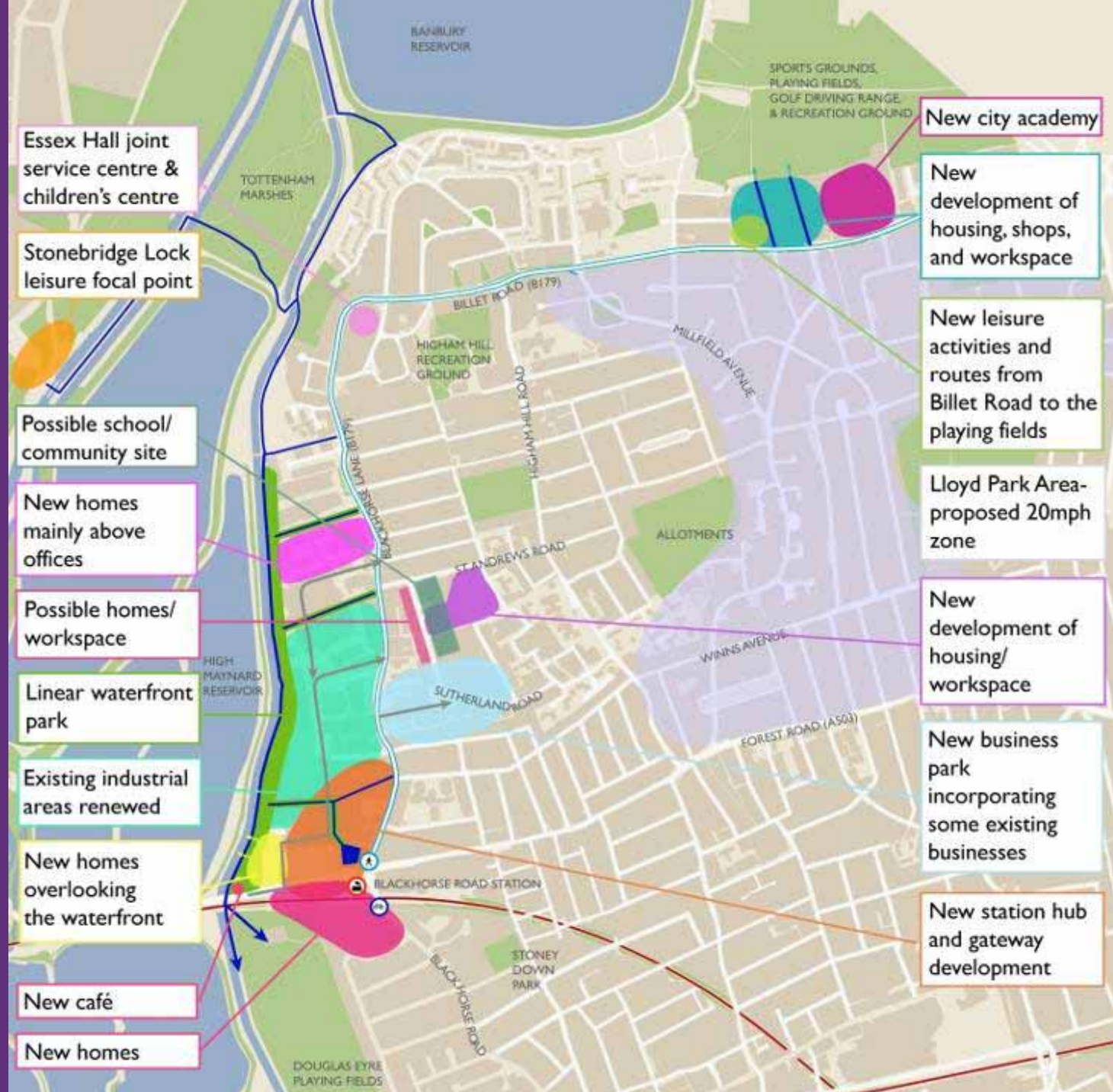




Proposed new square opposite Blackhorse Road Station (Options 2 and 3)

OPTION 3

Opening up the Lee Valley





Proposed waterfront park and housing
(Option 3 only)



Blackhorse Lane: *fulfilling the potential*



HOW TO GET INVOLVED

- Ask questions or make comments now
- Look at the big maps in the foyer
- Read the booklet and return the postcard to give your views
- Come to the Exhibition to find out more



Blackhorse Lane: *fulfilling the potential*



NEXT STEPS

We will:

- Consider the feedback from residents, businesses and partner agencies
- Select a preferred option taking into account your views.
- Let you know which option is being taken forward and tell you about future opportunities to get involved.



Blackhorse Lane: *fulfilling the potential*



THANK YOU

Matthew Nimmo
Regenfirst

Photos: Independent Media Solutions Ltd (www.imsl.biz), Darrell Fields, Chris Stadtler, Keith Libble

